



# MONTHLY MEMBERSHIP PROGRESS REPORT

Results as of: 6/30/2015

Multiple District 321

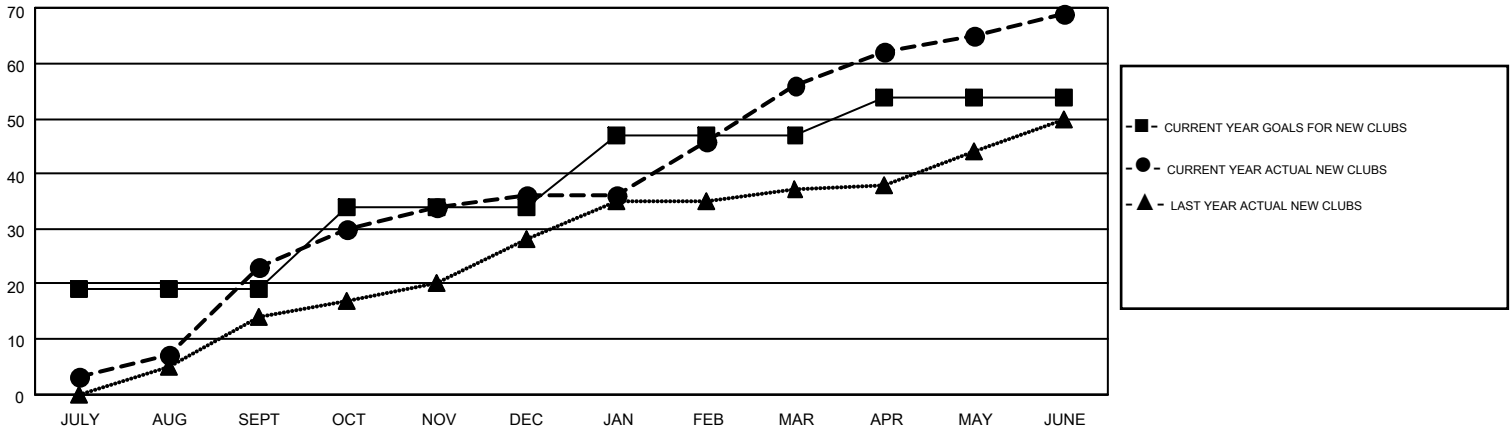
LOCATION: INDIA

GMT: V S KUKREJA

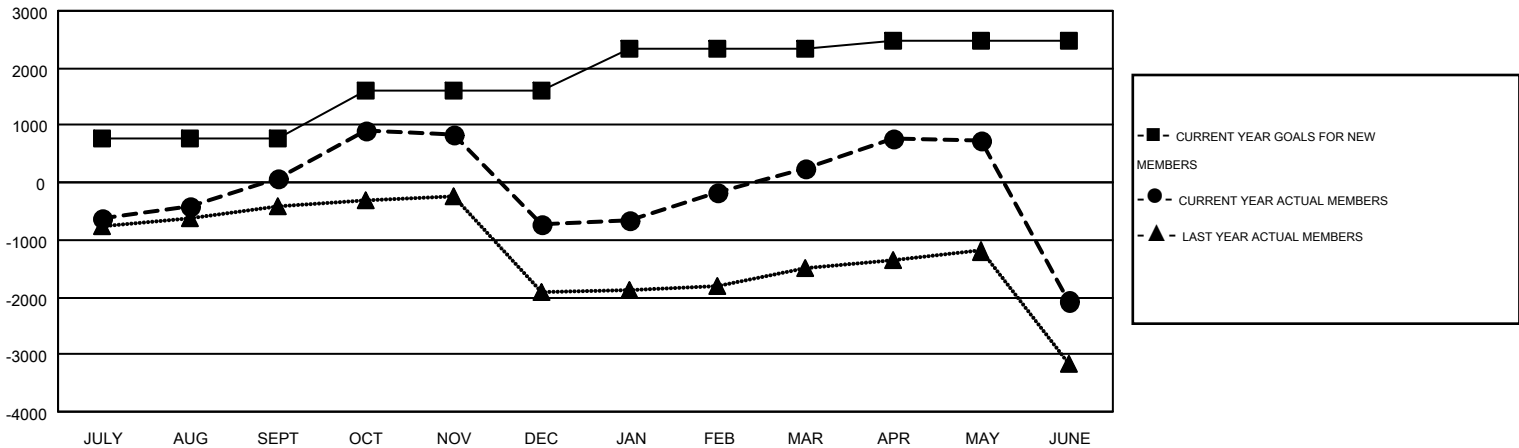
GMT CA 6

| Clubs                 |               |           |               |               | Members               |                 |                               |                 |               |
|-----------------------|---------------|-----------|---------------|---------------|-----------------------|-----------------|-------------------------------|-----------------|---------------|
| RESULTS FOR 2014-2015 |               |           |               |               | RESULTS FOR 2014-2015 |                 |                               |                 |               |
| QUARTER               | NEW CLUB GOAL | NEW CLUBS | DROPPED CLUBS | NET GAIN/LOSS | QUARTER               | NEW MEMBER GOAL | CHARTER AND NEW MEMBERS ADDED | DROPPED MEMBERS | NET GAIN/LOSS |
| JULY/AUG/SEPT         | 19            | 23        | 5             | 18            | JULY/AUG/SEPT         | 761             | 1,428                         | 1,350           | 78            |
| OCT/NOV/DEC           | 15            | 13        | 66            | -53           | OCT/NOV/DEC           | 852             | 1,564                         | 2,363           | -799          |
| JAN/FEB/MAR           | 13            | 20        | 11            | 9             | JAN/FEB/MAR           | 715             | 1,666                         | 690             | 976           |
| APR/MAY/JUNE          | 7             | 13        | 73            | -60           | APR/MAY/JUNE          | 145             | 1,607                         | 3,931           | -2,324        |

GOALS AND ACTUAL NEW CLUBS CUMULATIVE



GOALS AND ACTUAL MEMBERS CUMULATIVE



|                        |   |                            |                     |
|------------------------|---|----------------------------|---------------------|
| DROPPED CLUBS: 155     | 640 CLUBS OF 1034 ADDED 1 OR MORE NEW MEMBERS         | <u>GENDER DISTRIBUTION</u> |                     |
|                        |   | MALE                       | 21,768 (74.55%)     |
| <u>DROPPED MEMBERS</u> | <a href="#">CLICK HERE FOR HEALTH ASSESSMENT DATA</a> | FEMALE                     | 7,430 (25.45%)      |
| DECEASED               |   | 79                         | FAMILY UNIT MEMBERS |
| CLUB CANCELLED         | 3,656   | HEAD OF HOUSEHOLD          | 5,450               |
| OTHER                  | 4,599   | NON-HEAD OF HOUSEHOLD      | 7,563               |
| <b>TOTAL</b>           | <b>8,334</b>  |                            |                     |